

JEC 2019

ORIENTEERING JUNIOR EUROPEAN CUP
Ardèche - France  September 27 th to 29 th

BULLETIN 3

August 2019

One month to wait for European Cup in Ardèche!



Dear Orienteering friends,

On behalf the French Orienteering Federation, we welcome warmly the Europeans Juniors teams in Ardeche, which is a fantastic place for outdoor sports

We are very glad that the local federation, CDCO07, took over the organization of this international event in 2019. The CDCO07 organized already successful national events in the past years, and I'm convinced that also this year, CDCO07 will provide a high level technical and well organised competition. Such an event needs the help and the involvement of many volunteers to make the preparations as well as on the day of the event. Thanks to all of them and thanks to all the partners and the sponsors.

We hope you will enjoy your stay in France and wish you a very good competition.

Michel EDIAR
President of the French Orienteering Federation

Organisers



With the involvement of orienteering clubs of Ardèche



RAIDLINK'S 07

Contact

<http://jec2019.fr>

Event Director: Thomas Pardoën, evenements@cdco07.fr

Teams relation and registration: evenements@cdco07.fr

IOF Advisor : Alain Antoine, alain.antoine@no-log.org Tel : 0607397284

Technical consultant: Olivier Coupat. He is made available by the French federation and will not be the coach this year for the French team.

Race center and Accomodations

Race Center:

Domaine Lou Capitelle
470 Rue du Pigeonnier
07200 VOGUE

<https://www.loucapitelle.com>

Accomodations :

Domaine Lou Capitelle
470 Rue du Pigeonnier
07200 VOGUE

<https://www.loucapitelle.com>

Domaine du Cros d'Auzon
805 Chemin de l'Auzon
07200 SAINT MAURICE D'ARDECHE

<http://www.domaine-cros-auzon.com>

Programme

| Date | JEC Event | Spectator Event | Map |
|------------------------------------|-------------------------------------|--|---|
| Wednesday 25.9.19 9h-18h | Model Event Sprint and Forest | - | Vogu , Lanas, Vesseaux, Lachapelle sous Aubenas |
| Tuesday 26.9.19 9h-18h | Model Event Sprint and Forest | - | Vogu , Lanas, Vesseaux, Lachapelle sous Aubenas |
| Friday 27.9.19 8h-12h | Model Event Sprint and Forest | - | Vogu , Lanas, Vesseaux, Lachapelle sous Aubenas |
| Friday 27.9.19 | SPRINT 13:30 pm-16 pm | Sprint 16.30 pm - 19:00 pm | Ruoms |
| Saturday 28.9.19 | LONG DISTANCE 10 am-13 pm | Long Distance 13.30 pm- 17 pm | La Croix de Bauzon |
| Sunday 29.9.19 | RELAY 9.30 am-12 am | Mass Start Middle Distance from 12.30 pm | Vesseaux |

Competition formats

Sprint : Classes W18, W20, M18 et M20.
Maximum 6 competitors per nation in each class.
Race time: 12-15 minutes
Tracer : Thomas Pardoen



| Scale | Equidistance | Date of mapping |
|---------------|--------------|-----------------|
| 1/4000 | 2,5m | Feb 2019 |

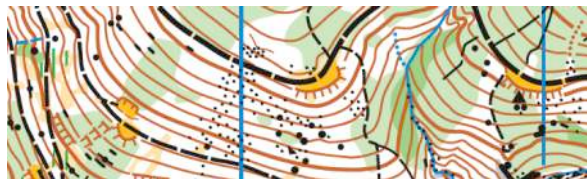
| Class | Lengths | Climbing | Number of controls |
|------------|---------|----------|--------------------|
| W18 | 1,97 km | 25m | 16 |
| W20 | 2,12 km | 30m | 18 |
| M18 | 2,41 km | 40m | 17 |
| M20 | 2,53 km | 45m | 17 |

Long Distance : Classes W18, W20, M18 et M20.

Maximum 6 competitors per nation in each class.

Race time: W18 – 50', W20 – 60', M18 – 60', M20 – 70'

Tracer : Benoit Peyvel



| Scale | Equidistance | Date of mapping |
|----------------|--------------|-----------------|
| 1/15000 | 5m | Sept 2018 |

| Class | Lenghts | Climbing | Number of controls |
|------------|---------|----------|--------------------|
| W18 | 6,01 km | 350 m | 11 |
| W20 | 6,36 km | 400 m | 11 |
| M18 | 8,17 km | 495 m | 11 |
| M20 | 9,10 km | 590 m | 12 |

Lenghts and climbing are provisional

Relay : Two classes : W18/20 et M18/20

4 teams of 3 competitors per nation in each class.

Mixed nation teams are admitted. Race time: W-30' coureur, M-35'/coureur

Tracer : Bruno Mercier



| Scale | Equidistance | Date of mapping |
|----------------|--------------|-----------------|
| 1/10000 | 5m | Sept 2018 |

| Class | Lenghts | Climbing | Number of controls |
|---------------|---------|----------|--------------------|
| W18/20 | | | |
| Leg 1 and 2 | 3,7 km | 195 m | 15 |
| Leg 3 | 4,4 km | 235 m | 19 |
| M18/20 | | | |
| Leg 1 and 2 | 4,2 km | 235 m | 17 |
| Leg 3 | 4,8 km | 280 m | 18 |

AWARDS CEREMONY :

The prizes will be awarded after each race at the competition venue. We ask each nation to come with a USB key containing the national anthem in order to broadcast it to the winners. the music will have to be in wave format .wav

A National Team Score will be established based on the results of all three competitions as follows:

Sprint and Long Distance: the two best runners from each nation and each class will be counted. The number of points earned equals the ranking (1st = 1 point, 2nd = 2 points, etc). If a nation has only one or no runner in a class, the non-existent starts will be counted by taking the total number of starters in that class +1.

Relay: The best team for each nation, in each class, will be counted with its ranking multiplied by 6.

Overall score: The National Team with the lowest total after the three competitions wins and becomes Junior European Cup Team Champion 2019.

Note: Runners from a non-European country may enter but will not count in the scoring, however they can be daily individual winners.

Punching system

Sport-Ident-SI Air (SIAC) will be used only for the Sprint.
SI Standard will be used for Long distance and Relay.

SIAC can be rented to the organisation on demand no later than Sept.1st

Training maps

4 training maps will be available for teams from Wednesday 25.9 (morning) to Friday 27.9 (12:00 pm) :

- 2 sprint maps from Vogué and Lanás (5' of the accomodation)
- 2 forest maps from Vesseaux and Lachapelle sous Aubenas with comparable terrain to the relay (5 to 15' of the accomodation)

There will be controls on the maps but no course, so that each teams will be able to trace their course as they want.

| Map Name | Map scale | Relavant for | With controls |
|--------------------------------|------------------|---------------------|----------------------|
| Lanas | 1/4000 | Sprint | Yes |
| Vogué | 1/4000 | Sprint | Yes |
| Lachapelle sous Aubenas | 1/10000 | Relay | Yes |
| Vesseaux | 1/10000 | Relay | Yes |

Terrains and embargoed areas

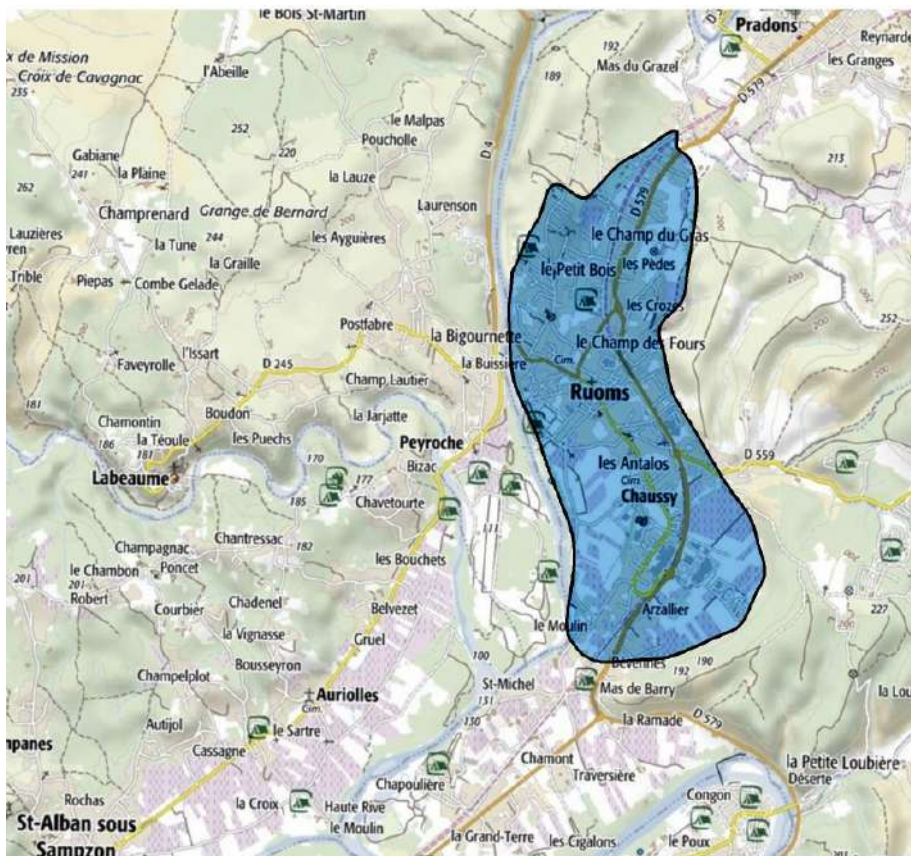
SPRINT : RUOMS

Urban area with old village

Low denivelation

Altitude : 100m above sea level

No old map available

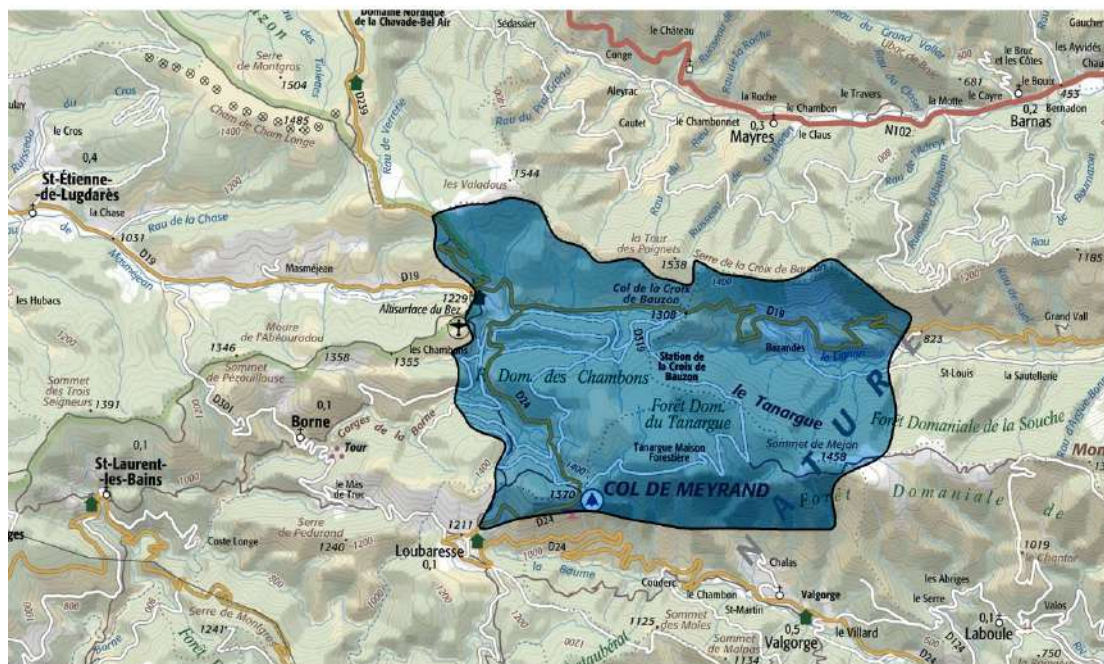


LONG DISTANCE : La Croix de Bauzon Ski Resort

Forest area, beeches and coniferous trees, steep side and alpine plateau

Altitude : 1300 to 1500 m above sea level

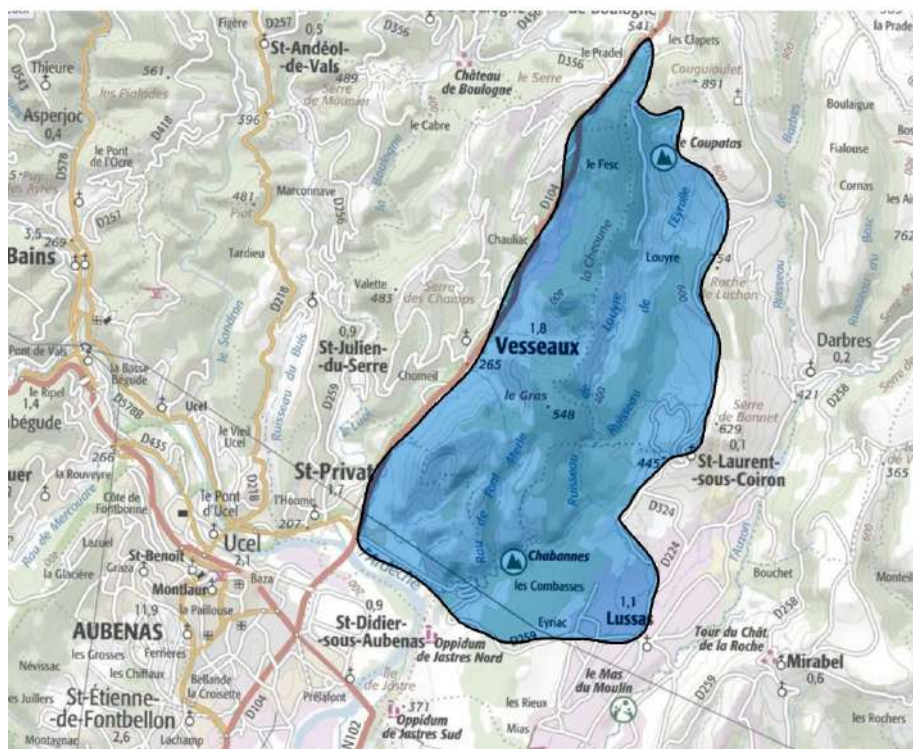
Old map available on www.jec2019.fr (scale 1/20000)



RELAY: VESSEAUX

Pine Forest and Ravins
Altitude : 400m above sea level

No old map available



Entries and costs

Please download and use the Excel Entry Form <http://jec2019.fr> and return it by mail to evenements@cdco07.fr with the corresponding payment before 1/9/2019.

The entry fee included:

- Entries to all 3 competitions and maps for coaches
- Accommodation and meals : lunches, breakfast and dinners at the Lou Capitelle Hotel in Vogué <https://www.loucapitelle.com> or at the Domaine du Cros d'Auzon Hoel in Saint Maurice d'Ardèche <http://www.domaine-cros-auzon.com>
- The teams need to organise all transport by themselves.
- The entry fee is the same for athletes and coaches.
- For teams that wish, it is possible to book additional nights before or after the race and individual rooms.

| | Arrival date | |
|----------------|--------------------------------------|--------------------------------------|
| Date of entry | From 27.09 (night) to 29.09 (midday) | From 26.09 (night) to 29.09 (midday) |
| Until 01.07.19 | 190€ per pers | 230€ per pers |
| Until 01.08.19 | 200€ per pers | 240€ per pers |
| Until 01.09.19 | 220€ per pers | 260€ per pers |

| | |
|-------------------------|--------------------------------|
| Additional Night | 75€ per pers per night |
| Individual Rooms | +15€ per room per night |

| | |
|------------------------|-----------------|
| Training map | 4€/map per pers |
| SI AIR Rental (Sprint) | 5€/SI |

Spectator Event

Spectator races are open for all public after official JEC races and takes place at the same terrains as the JEC. For the Sprint and LD, you can make the same circuits as the JEC

Friday 27.09 : SPRINT

Saturday 28.09 : LONG DISTANCE

Sunday 29.09 : MASS START MIDDLE DISTANCE

Registration

For French licensees: <http://licences.ffcorientation.fr/inscriptions/>

For Foreign runners: <http://www.orienteingonline.net>

French Pass Orientation is mandatory to compete in France if you don't have a french licence. The price include Pass Orientation.

These 3 races are include in the National Orienteering Challenge.

Informations and entries : <http://jec2019.fr>

General location and travelling

Lyon St Exupéry Airport to Vogué : 2h10'
Highway A7 – Exit 16 – Loriol (1hour)

Marseille Provence Airport to Vogué: 2h10
Highway A7 – Exit 18 – Montélimar Sud (45')

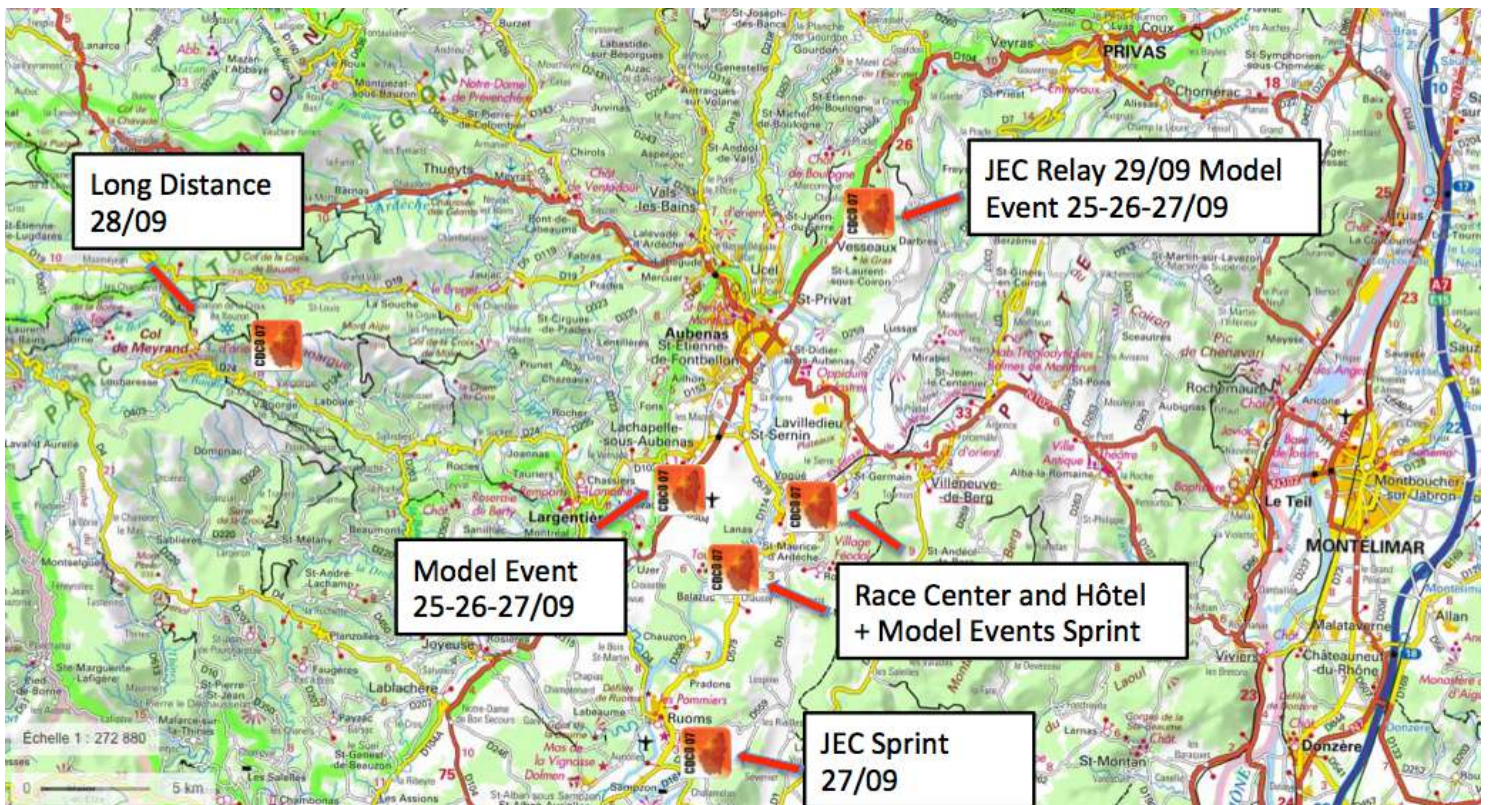
Genève Airport to Vogué : 3h30'
Highway A7 – Exit 16 – Loriol (1h)



Vogué – Ruoms (Sprint) : 20 minutes

Vogué –La Croix de Bauzon Ski Resort (LD) : 1 hour

Vogué – Vesseaux (Relay) : 20 minutes



Partenaires institutionnels



Partenaires Officiels



Fournisseurs Officiels



Les Caves Vivaraises

