

BULLETIN 1

September 2018

Welcome to Ardèche !

The Ardèche Orienteering Departemental Committee is happy to welcome you to the 2019 edition of the Junior European Cup. It is a pleasure to make you discover the diversity of the landscapes of the area.

Sprint will take you head south, next to the famous Canyon of Ardèche. The race will take place in the heart of a typical village of South Ardèche.

Long Distance : on the way to the mountain of Ardèche, to discover a new altitude landscape and its preserved forest.

Finally, come back to the south for the Relay. For the first time in Ardèche, it will take place around the plateau of Coiron, to reserve you some beautiful surprises...

The event will take place in September 2019, under the sun of Ardèche !



Organisers



With the involvement of orienteering clubs of Ardèche



RAIDLINK'S 07

Contact

<http://jec2019.fr>

Event Director: Thomas Pardoën, evenements@cdco07.fr, Tel : 0607966486

Teams relation: Agnès Pétermann, evenements@cdco07.fr

IOF Advisor : Alain Antoine, alain.antoine@no-log.org Tel : 0607397284

Race center and Accomodation

Domaine Lou Capitelle
470 Rue du Pigeonnier
07200 VOGUE

<https://www.loucapitelle.com>

Programme

Date	JEC Event	Spectator Event	Map
Thursday 26-9-19	Model Event Sprint Model Event Relay		Vogué Vesseaux
Friday 27-9-19	Sprint	Sprint	Ruoms
Saturday 28-9-19	Long Distance	Long Distance	La Croix de Bauzon
Sunday 29-9-19	Relay	Mass Start Middle Distance	Vesseaux

Competition formats and classes

Sprint :

Classes W18, W20, M18 et M20.

Maximum 6 competitors per nation in each class.

Race time: 12-15 minutes

Long Distance :

Classes W18, W20, M18 et M20.

Maximum 6 competitors per nation in each class.

Race time: W18 - 50 minutes, W20 - 60 minutes, M18 - 60 minutes, M20 - 70 minutes

Relay :

Two classes : W18/20 et M18/20

Maximum 4 teams of 3 competitors per nation in each class.

Mixed nation teams are admitted.

Race time : W - 30 minutes/racer, M - 35 minutes/racer

Punching system

Sport-Ident-SI Air (SIAC) will be used for the Sprint.

SI Standard will be used for Long distance and Relay.

SIAC can be rented to the organisation on demand (as detailed below).

Training maps

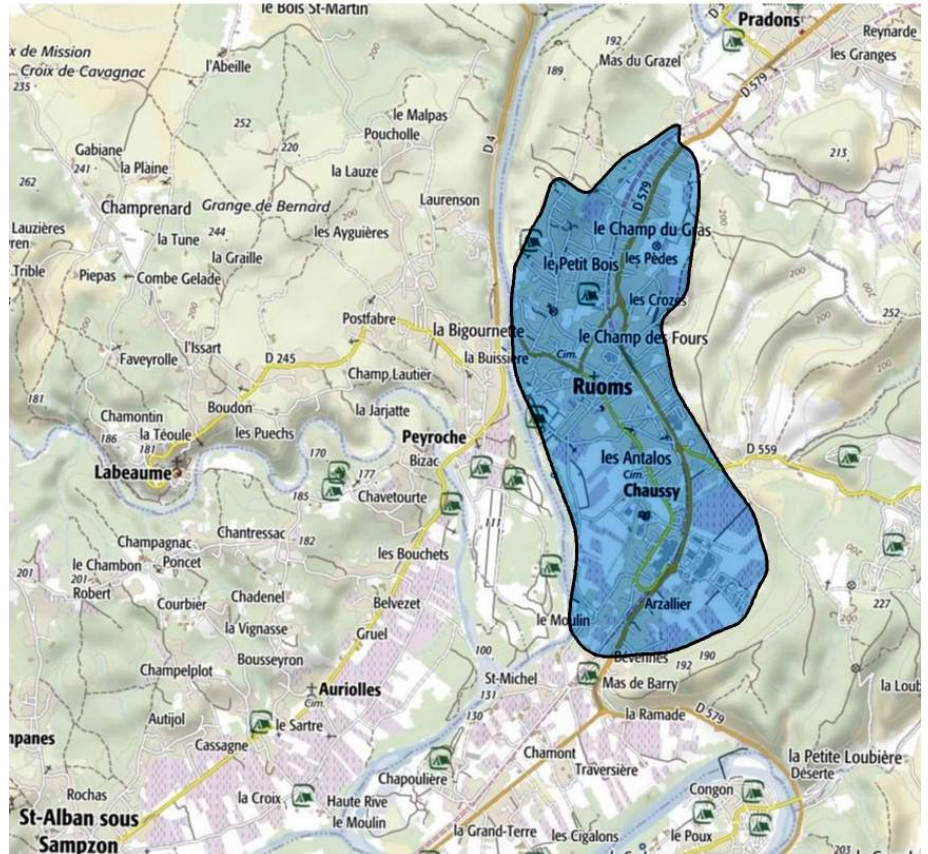
2 training maps will be available for teams from Thursday 26.09 (morning) to Friday 27.09 (2:00pm) :

- a sprint map from Vogué (next to the accommodation)
- a forest map from Vesseaux (comparable terrain to the relay)

Terrains and embargoed areas

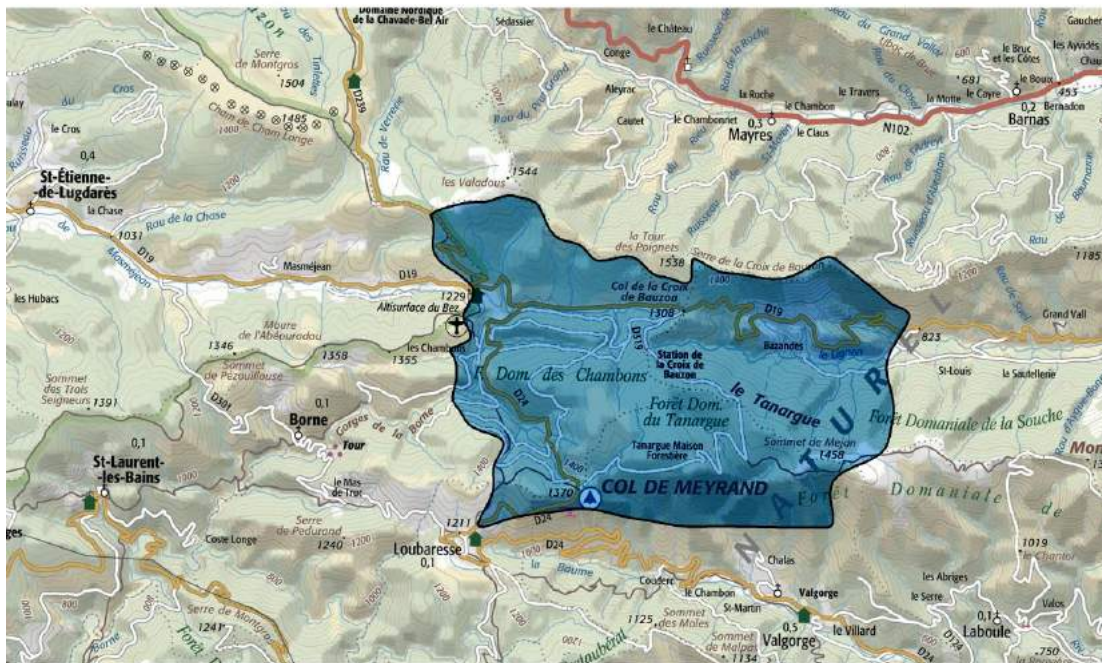
SPRINT : RUOMS

Urban area with old village
Low denivelation



LONG DISTANCE : Ski resort

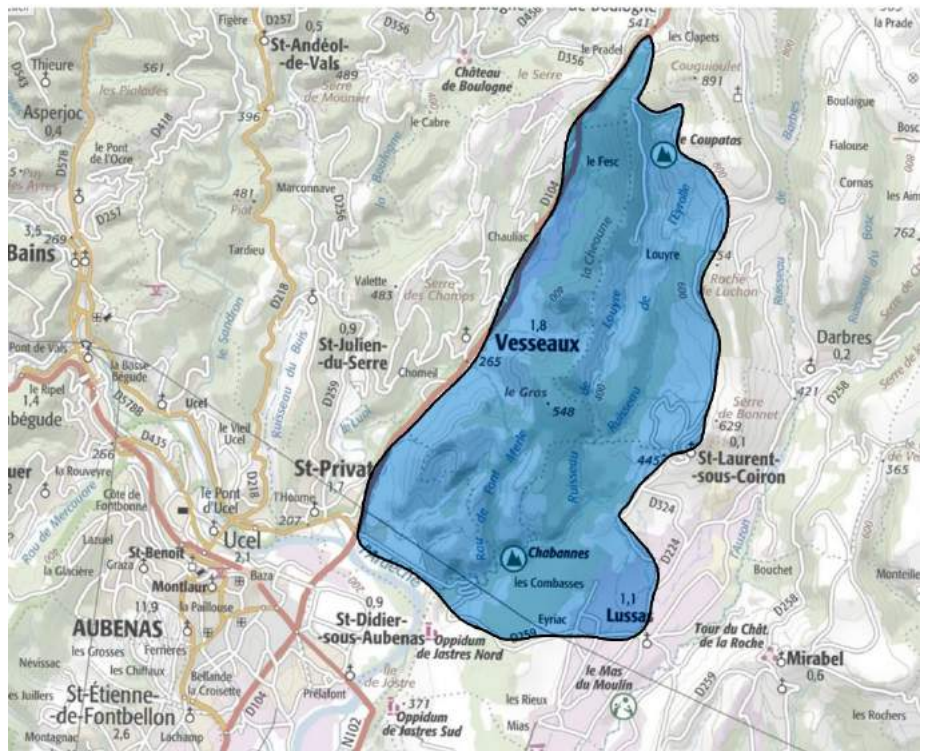
Forest area, beeches and coniferous trees, steep side and alpine plateau
Altitude : 1300 to 1500 m above sea level



RELAY: VESSEAUX

Pine Forest and partly open area

Altitude : 400 m above sea level



Entries and costs

The entry fee included:

- Entries to all 3 competitions and maps for coaches
- Accommodation and meals : lunches and dinners at the Lou Capitelle Hotel in Vogué <https://www.loucapitelle.com>

	Date of arrival	
Date of entry	From 27.09 (night) to 29.09 (midday)	From 26.9 (night) to 29.09 (midday)
Until 01.06.19	190€ per pers	230€ per pers
Until 01.08.19	200€ per pers	240€ per pers
Until 01.09.19	220€ per pers	260€ per pers

Training map	4€/map
SI AIR Rental (Sprint)	5€/SI

- The teams need to organise all transport by themselves.
- The entry fee is the same for athletes and coaches.

Spectator Event

Spectator races are open for all public after official JEC races.

Friday 27.09 : SPRINT

Saturday 28.09 : LONG DISTANCE

Sunday 29.09 : MASS START MIDDLE DISTANCE

These 3 races are include in the National Orienteering Challenge.

Informations and entries : <http://jec2019.fr>

General location and travelling

Lyon St Exupéry Airport to Vogué : 2h10

Highway A7 – Exit 16 – Loriol (1 hour)

Marseille Provence Airport to Vogué: 2h10

Highway A7 – Exit18 – Montélimar Sud (45 minutes)

Valence TGV train station to Vogué : 1h20

Highway A7 – Exit 16 – Loriol (1 hour)



Vogué – Ruoms (Sprint) : 20 minutes

Vogué –La Croix de Bauzon ski resort (LD) : 1 hour

Vogué – Vesseaux (Relay and Model Event) : 20 minutes

